

Continuum E-news

Winter 2006/07

www.continuumleisure.co.uk



PRO ACTIVE East London

Community Sport & Physical Activity Networks

Continuum has been working closely with PRO-ACTIVE East London to help establish Community Sport and Physical Activity Networks (CSPANs) in East London. Six CSPANs will be ready to deliver jointly agreed projects by April 2007 in the London boroughs of Hackney, Lewisham, Greenwich, Redbridge, Havering and Barking and Dagenham.

CSPANs will identify their own local needs, priorities and potential interventions to then develop a shared local vision that is supported by key partners, including the Local Strategic Partnership.

Continuum is working with each area to facilitate the development of the Networks and to establish an Action Plan for the development and

delivery of each CSPANs future work.

East London's CSPANs will have the opportunity to bid for targeted funds from Sport England via PRO-ACTIVE East London to deliver strategically led projects in line with common goals identified within the 'The Framework for Sport and Physical Activity in East London/ (produced by Continuum) of:

- Widen access to sport and physical activity
- Improve health and well being
- Develop sporting pathways
- Enhance education and skills
- Strengthen organisations and partnerships

The vision for each CSPAN is to consolidate and co-ordinate existing sport and physical activity provision. This will create opportunities to maximise the use of current and future resources.

It will allow key stakeholders to plan and deliver robust partnership projects within the given local authority boundary and also within the scope of Local Area Agreements. For details contact gabby@continuumleisure.co.uk





2012 Pre-Games Training Camps Applications

In the weeks and months leading up to the 2012 Games, athletes in National teams from across the world will be training and preparing for the competition. To help identify, promote and establish suitable facilities to host pre-games training camps, the London Organising Committee for the Olympic Games (LOCOG) produced a selection and accreditation criteria and established a bidding process for facilities keen to support training camps.

Continuum was commissioned by host boroughs of Hackney and Newham to compile applications on behalf of suitable sports facilities across the two boroughs. Working within a tight timeframe

Continuum conducted site visits to assess a number of facilities for their potential to host training camps for one or multiple Olympic & Paralympic Sports. At the same time, detailed audits were compiled to identify nearby transport links, accommodation and medical support and a range of other key ancillary services.

A similar process was undertaken on behalf of the London Borough of Lewisham and despite a very hectic month, we are pleased to announce that a large number of applications were submitted to LOCOG before the deadline on the 31st of December. We look forward to hearing how those applications progress. For more information contact matt@continuumleisure.co.uk grace@continuumleisure.co.uk

Sporting Club Thamesmead

Continuum are continuing our development work on a number of projects in Thamesmead. Most recently, the Trust has given the go-ahead for development of detailed proposals for 'Sporting Club Thamesmead,' a new multi-sport hub on the site of Thamesmead Town Football Club.

Following Continuum's initial feasibility study we are now managing the further development of new multi sport facilities including a new changing building and outdoor, artificial pitches in partnership with the Trust, the Football Club, Bexley Council and the appointed design team, Saville Jones Consultants.

Continuum is working with the Football Association with a view to submitting a bid to the Football Foundation to assist in funding the capital costs of the project. For more information, contact richard@continuumleisure.co.uk



LONDON BOROUGH OF HACKNEY – INTERIM LEISURE CONTRACT MANAGEMENT

As reported previously, we secured the contract to produce the East London Sport & Physical Activity Network's 10 yr 'Framework for Sport & Physical Activity'. The winter months have seen us make great progress of this influential document. Detailed research and consultation led to the production of a first draft

early in the new year, and a final version of the Plan has recently been completed following consultation with key stakeholders. This Framework is expected to be formally published at the end of May, following the official launch of Pro-Active East London at the Palace of Westminster on 24 May. Pro-Active East London

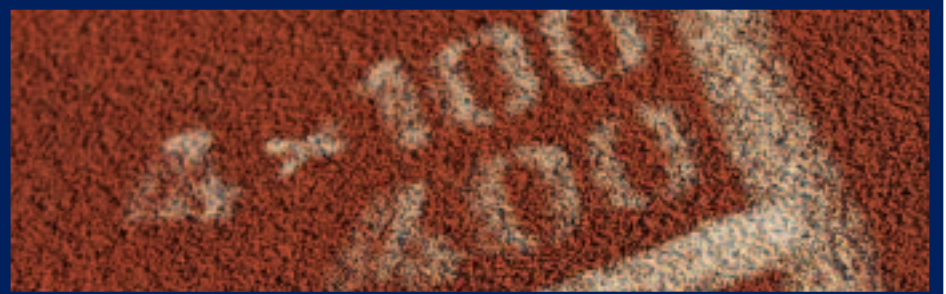
further commissioned us to write an Executive Summary of the Framework, and also help produce a Delivery Plan, which will sit alongside the Framework and outline the detailed targets, actions and resources required to deliver the Framework's key themes. For details contact richard@continuumleisure.co.uk

Newham Leisure Asset Strategy

The London Borough of Newham has commissioned Continuum to review how its sport and leisure facilities can best serve residents and visitors to the borough in the future, with the objective being to develop an Action Plan for Leisure Centres and Sports Facilities which will cover the period up to 2020.

Continuum are focusing on both community level provision for sport within the Borough as well as the new facilities planned for the borough as part of the 2012 London Olympic Games. The production of a report, a clear set of recommendations and a detailed action plan will assist the Council in fulfilling the existing and future needs of sport and physical activity.

This high profile project for London's leading 2012 borough will be coordinated with all relevant sectors of provision, most notably health, education, housing, transport. It takes into account issues of access, population change, efficient use of resources and of course the ODA and LOCOG's legacy proposals for Newham and neighbouring boroughs. For details contact nick@continuumleisure.co.uk



North West of England –2012 Pre-Games Camps

Building on our work with a number of London boroughs in preparation of applications for London 2012 Pre-Games Training Camps, we have been appointed by Sport England's North West office to assess the applications to host the region's Camps.

Continuum are working with Sport England, the North West Development Agency and the British Olympic Association throughout February and March 2007 to prepare a shortlist of potential training

venues in the North West of England. This will then be put forward to the London Organising Committee for the Olympic Games (LOCOG) who will produce a guide outlining facilities across the UK which could be used to host Pre-Games Training Camps in the lead up to the Olympic and Paralympic Games. This will be distributed to all national teams at the Beijing Games in 2008.

For details, contact nick@continuumleisure.co.uk

A warm welcome to our new team member

Continuum are delighted to announce the appointment of Gabby Powell who joined the team in January. With 8 years of local authority experience, an impressive background in sport & physical activity development, Gabby has quickly become a strong asset to Continuum.

Gabby was a major contributor to the successful establishment of the Oxfordshire Sports Partnership and led on the development of many Community Sport Networks (CSN's/CSPAN's).

She has exceptional workshop facilitation and partnership development skills which are currently being put to good use in supporting PRO-ACTIVE East London in establishing and developing 6 Community Sport and Physical Activity Networks and producing associated action plans as well as assisting in the production of the PRO-ACTIVE East London Delivery Plan 2007 – 09.

Gabby can be contacted on 020 7554 8686 or by email at gabby@continuumleisure.co.uk